



# Graduate Student Manual Academic Year 2026

Graduate School, Burapha University

# Table of Content

<b>Part 1 Introduction</b>	<b>1</b>
- History of Burapha University	2
- Educational Philosophy and Mission of Burapha University	4
- University Logo	4
- University Color	5
- Symbolic Tree	5
- Calendar for Graduate Students Academic Year 2025	6
<b>Part 2 Graduate School Burapha University</b>	<b>9</b>
- History of Graduate School Burapha University	9
- Graduate School Location	9
- Graduate School Color	10
- Educational Philosophy, Mission and Values of Graduate School	10
- Graduate School Organizational Structure	11
- Executive Board	12
- Personnel	13
- Faculty/College with Graduate Education	15
- Graduate School Services	16
- Qualifying Examination Calendar for Doctoral Students	17
- Comprehensive Examination Calendar for Master’s Students	17
- Compulsory Training Program	18
- i-Thesis system training procedures and Research ethics training procedures	19
- Electronic Documents System GRD-FORMS and Manuals	20
- Procedures for Dissertation, Thesis & Independent Study (GRD-001 to GRD-008)	21
- Submission of Supporting Documents for Graduation (GRD-Exit)	24
- i-Thesis System and Manual	25
- Plagiarism Checking of Graduate Student’s Academic Works	26
- Information System relating to Graduate Students	27
<b>Appendix</b>	<b>28</b>

## Part 1

### Introduction

#### History of Burapha University

Burapha University began as Bangsaen Educational College established on 8 July 1955, as the first tertiary educational institution outside of Bangkok. Then, the college was developed into the Bang Sean branch campus of Srinakharinwirot University on 29 June 1974. The Bang Saen campus was upgraded to Burapha University on 29 July 1990 and shifted to an autonomous university on 9 January 2008.



#### The First Steps: Bangsaen Educational College (1955 - 1974)

In the year 1949, the Ministry of Education established the High-Level Teacher Training School at Soi Prasarnmit, Prakanong District, Pranakorn Province. Afterwards, in 1954, the school was upgraded to be an educational college and renamed Prasarnmit Educational College. The college expanded and established two campuses; Pratumwan Educational College in Pranakorn Province and Bangsaen Educational College in Chon Buri Province on 8 July 1955.



### **The Next Steps: Srinakharinwirot University Bang Sean (1974 – 1990)**

According to Srinakharinwirot Act, Bangsaen Educational College was transformed to become a campus of Srinakharinwirot University and the supervision, which had been of The Ministry of Education, was changed to be under The Ministry of University Affairs. So on the following 29 June 1974, the Bangsaen Educational College was changed to Srinakharinwirot University, Bang Sean Campus.



### **The Next Steps: Burapha University (1990 – the present)**

Burapha University has been consistently developed in terms of physical environment, personnel, and administration. Multiple new organizations were established and expanded. This includes the establishment of Chanthaburi Campus in 1996 and Sakaeo Campus in 1997. Burapha University offers numerous educational levels: Bachelor's Degree, Master Degree, and Doctoral Degree in Social Sciences, Health Science, and Science and Technology.

### **Educational Philosophy**

The University focuses on inculcating the learners through practice-based learning, as for them to gain experiences in real-work environment, to be competent persons who are able to cope with the changes of the world, to engage in social accountability, and to be life-long learners.

### **Vision**

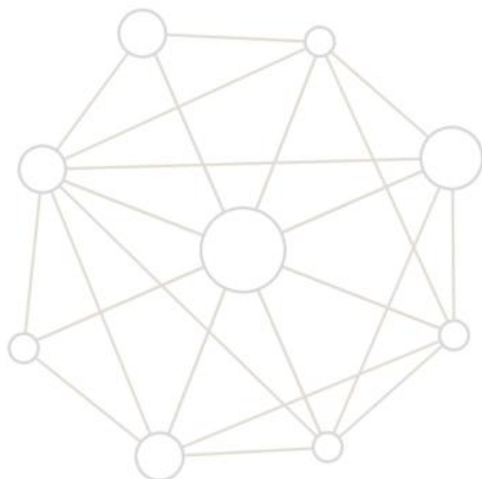
Wisdom of the East for the Future of the Nation

### **Mission**

1. Encourage educational freedom, equality in education, and life-long learning on the basis of moral and occupational ethics

2. Develop quality researches to create and further develop knowledge in all fields. Provide educational services and knowledge transfer to achieve higher competence in both public and private organizations, as well as the community to allow them to successfully adapt to the changes and development in politics, economics and social climate.

3. Encourage and support various types of public activities which includes preservation of arts, culture, religion and sports along with leadership roles in community and environmental development.



# W.E.

(Wisdom of the East)

# BURAPHA

มหาวิทยาลัยบูรพา **ขุมปัญญาตะวันออก**

## University Logo



### Version 1

The logo consists of two circles inside one another. The inner circle has a Thai “9” in the middle surrounded by golden flames. Eight lines of light shining above and three curved lines below the “9”. The outer circle has the words “Sukho Panna Patilabho” written on the top and “Burapha University” in Thai written on the bottom.



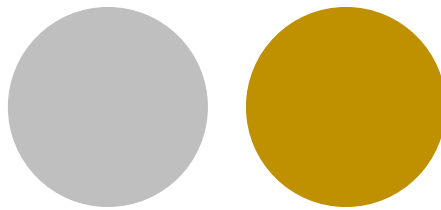
### Version 2

The logo consists of two circles inside one another. The inner circle has a Thai “9” in the middle surrounded by golden flames. Eight lines of light shining above and three curved lines below the “9”. The outer circle has the words “Burapha University” in Thai written on the top and “BURAPHA UNIVERSITY” written on the bottom.

## University Color : Gray and Gold

- Gray is the color of the brain. It represents the progress of intellectual knowledge.
- Gold represents virtue.

The colors gray and gold represents students from Burapha University possessing both knowledge and virtue.



## Symbolic Tree : Coconut tree



## Calendar for Graduate Students Academic Year 2026

(information available at <https://reg.buu.ac.th/> under “Calendar”)

### 1<sup>st</sup> Semester, Academic Year 2026

**First day of the semester:** Saturday, 4 July 2026

#### Midterm Examinations (9 days)

- Saturday, 5 September 2026 – Sunday, 13 September 2026

#### Last day of the semester

- Friday, 30 October 2026

#### Final Examinations (9 days)

- Saturday, 31 October 2026 - Sunday, 8 November 2026

#### Semester Break

- Monday, 9 November 2026

#### Public Holidays

- Wednesday, 8 July 2026
- Tuesday, 28 July 2026
- Wednesday, 29 July 2026
- Thursday, 30 July 2026
- Wednesday, 12 August 2026
- Thursday, 13 October 2026
- Friday, 23 October 2026

**Note that** make up classes are determined by the decisions of the faculty/college.

## 2<sup>nd</sup> Semester, Academic Year 2026

**First day of the semester:** Saturday, 21 November 2026

### Midterm Examinations (7 days)

- Saturday, 23 January 2027 - Sunday, 31 January 2027

### Last day of the semester

- Friday, 26 March 2027

### Final Examinations (9 days)

- Saturday, 27 March 2027 – Sunday, 4 April 2027

### Semester Break

- Monday, 5 April 2027

### Public Holidays

- Saturday, 5 December 2026
- Monday, 7 December 2026
- Thursday, 10 December 2026
- Thursday, 31 December 2026
- Friday, 1 January 2027
- Sunday, 21 February 2027
- Graduation Rehearsal at faculty for Academic Year 2025 (1 day)
- Graduation Rehearsal at the auditorium for Academic Year 2025 (2 days)
- Final Graduation Rehearsal for Academic Year 2025 (2 days)
- Graduation Day for Academic Year 2025 (2 days)

**Note that** make up classes are determined by the decisions of the faculty/college.

## Summer Semester, Academic Year 2026

**First day of the semester:** Monday, 19 April 2027

### Midterm Examinations (7 days)

- Monday, 24 May 2027 - Sunday, 30 May 2027

### Last day of the semester

- Sunday, 20 June 2027

### Final Examinations (7 days)

- Monday, 21 June 2027 – Sunday, 27 June 2027

### Semester Break

- Monday, 28 June 2027

### Public Holidays

- Tuesday, 4 May 2027
- Thursday, 20 May 2027
- Thursday, 3 June 2027

**Note that** make up classes are determined by the decisions of the faculty/college.

## Part 2

### Graduate School Burapha University

#### History of Graduate School

2526 - 2551	Establishment of Graduate School
2551	Graduate School ceased operation
2552 - 2560	Board of Graduate Education under the Vice President of Academic Affairs handled graduate education of Burapha University.
2561 - ปัจจุบัน	Re-establishment of Graduate School



#### Current Location of Graduate School Burapha University

2<sup>nd</sup> Floor, 60<sup>th</sup> Anniversary of Her Majesty Queen Sirikit Building 1 (QS1), Burapha University  
169 Long Hard-Bangsaen Road, Tambon Saensuk, Amphoe Muang, Chonburi 20131

Contact during official working hours call 038-102-700 ext. 705, 707

Mobile: 065-853-827 Website <http://grd.buu.ac.th>

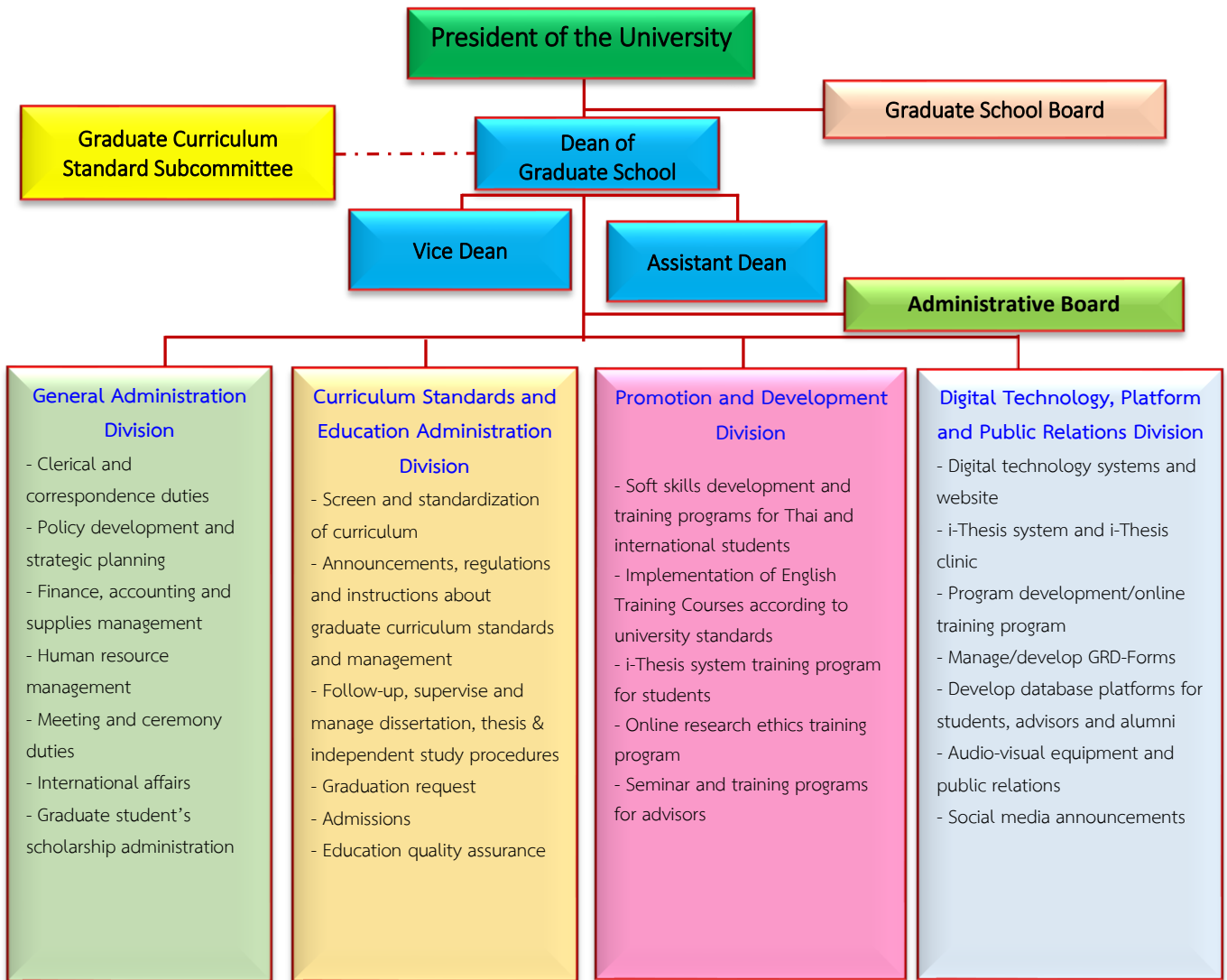
## Graduate School Color

Ocean Blue is the color of the ocean abundant with natural resources. Comparable to the Graduate School's abundance in intellect and knowledge.



Graduate School	
<b>Philosophy</b>	To promote modernized curricula, enhance advanced competencies, expand opportunities for lifelong learning, and drive organizational growth through innovation.
<b>Mission</b>	To administer, coordinate, support, and ensure that the university's graduate education meets quality standards, aligns with institutional strategies, operates effectively, and fosters interdisciplinary collaboration that integrates knowledge across diverse fields.
<b>Core Values</b>	Goal-driven Relationship Dedication
<b>Organizational Culture</b>	Oneness Network Excellent

## Graduate School Organizational Structure



## Executive Board

### Executive Board of the Graduate School



Assoc. Prof. Dr. Witawat Jangiam  
Dean of the Graduate School  
e-mail: witawat@eng.buu.ac.th



Asst. Prof. Dr. Montana Rungsiyopas  
Vice-Dean for Academic Affairs  
e-mail: montana@eng.buu.ac.th



Asst. Prof. Supphasin Thaweesak  
Vice-Dean for Strategic Planning, Research,  
and International Affairs and Research  
e-mail: supphasin@eng.buu.ac.th



Dr. Suparat Sukwisut  
Asst-Dean  
e-mail: suparat@go.buu.ac.th

## Personnel of the Graduate School



Atchareeya Yindeesuk  
Academic Officer  
Tel. 2700 ext. 707  
e-mail: atchareeya@go.buu.ac.th



Jaruda Temchok  
General Administration Officer  
Tel. 2700 ext. 705  
e-mail: jaruda@go.buu.ac.th



Nidawan Subannasanee  
Academic Officer  
Tel. 2700 ext. 707  
e-mail: nidawan@go.buu.ac.th



Chalita Sawadmongkol  
Academic Officer  
Tel. 2700 ext. 707  
e-mail: chalita.ch@go.buu.ac.th



Pongsathorn Katasila  
Academic Officer  
Tel. 2700 ext. 705  
e-mail: pongsathorn.ka@go.buu.ac.th



Saranon Yodseranee  
Computer Technical Officer  
Tel. 2700 ext. 705  
e-mail: saranon.yo@go.buu.ac.th



Natpaphat Pimphom  
Finance and Accounting Analyst  
Tel. 2700 ext. 707  
e-mail: natpaphat@go.buu.ac.th



Pipat Ruangchaisirawaet  
Education Officer  
Tel. 2700 ext. 705  
e-mail: pipatr@go.buu.ac.th



Thanaporn Khunwong  
General Service Officer  
Tel. 2700 ext. 705  
e-mail: thanaporn.kh@go.buu.ac.th



Kanok-orn Jamjumras  
General Service Officer  
Tel. 2700 ext. 705  
e-mail: kanokorn@go.buu.ac.th



Arisara Krahothong  
Academic Officer  
Tel. 2700 ext. 707  
e-mail: arisara.kr@buu.ac.th

## Faculty/College with Graduate Education

(For more information, please visit <http://grd.buu.ac.th/> and select “Admission Information” from the menu.)

Field of Study	Faculty
Humanities and Social Sciences	Burapha Business School ( <a href="http://www.bbs.buu.ac.th/">http://www.bbs.buu.ac.th/</a> )
	Faculty of Humanities and Social Sciences ( <a href="https://huso.buu.ac.th/">https://huso.buu.ac.th/</a> )
	Faculty of Fine and Applied Arts ( <a href="http://www.fineartbuu.org/">http://www.fineartbuu.org/</a> )
	Faculty of Political Science ( <a href="https://polsci.buu.ac.th/">https://polsci.buu.ac.th/</a> )
	Faculty of Law ( <a href="https://law.buu.ac.th/">https://law.buu.ac.th/</a> )
	Faculty of Education ( <a href="https://edu.buu.ac.th/">https://edu.buu.ac.th/</a> )
	Faculty of Music and Performing Arts ( <a href="http://mupa.buu.ac.th/">http://mupa.buu.ac.th/</a> )
	International College ( <a href="http://buuic.buu.ac.th/">http://buuic.buu.ac.th/</a> )
Medical Science	Faculty of Nursing ( <a href="http://nurse.buu.ac.th/">http://nurse.buu.ac.th/</a> )
	Faculty of Sport Science ( <a href="http://fss.buu.ac.th/">http://fss.buu.ac.th/</a> )
	Faculty of Allied Health Sciences ( <a href="http://alliedhs.buu.ac.th/">http://alliedhs.buu.ac.th/</a> )
	Faculty of Public Health ( <a href="http://www.phbuu.com/">http://www.phbuu.com/</a> )
	Faculty of Pharmaceutical Sciences ( <a href="http://pharm.buu.ac.th/">http://pharm.buu.ac.th/</a> )
Science & Technology	Faculty of Logistics ( <a href="https://buulog.com/">https://buulog.com/</a> )
	Faculty of Informatics ( <a href="https://www.informatics.buu.ac.th/">https://www.informatics.buu.ac.th/</a> )
	Faculty of Science ( <a href="http://science.buu.ac.th/">http://science.buu.ac.th/</a> )
	Faculty of Engineering ( <a href="http://www.eng.buu.ac.th/">http://www.eng.buu.ac.th/</a> )
	Faculty of Marine Technology ( <a href="http://marine.chanthaburi.buu.ac.th/">http://marine.chanthaburi.buu.ac.th/</a> )

## Graduate School Services

- Graduate admissions
- Examination schedule (QE,CE) and compulsory training program calendar (i-Thesis and research ethics) and dissertation, thesis & independent study procedures
- Allocate graduate level research scholarships and scholarships for academic conference presentations
- Implement English Training Courses for master's degree students for the purpose of applying for graduation
- Organize soft skills training program
- Manage the graduation process

Postscript additional information can be found at <http://grd.buu.ac.th/>



**Qualifying Examination (QE) and Comprehensive Examination (CE) Calendar  
Academic Year 2026 (B.E. 2569)**

No.	Activity	Round 1	Round 2	Round 3	Round 4	Website / Location
1	Students complete the application form for the Qualifying Examination and Comprehensive Examination (via Google Form) by attaching: - The approval form from the Head of the Program (GRD-QE01/GRD-CE01), downloadable from the Graduate School website: <a href="http://grd.buu.ac.th">http://grd.buu.ac.th</a> - Proof of payment (if any)	Between July 6 - 31, 2026	Between November 9 - 30, 2026	Between February 4 - 23, 2027	Between April 5 - 30, 2027	Graduate School Website <a href="http://grd.buu.ac.th">http://grd.buu.ac.th</a>
2	Graduate School announces the list of eligible candidates	August 5, 2026	December 8, 2026	March 2, 2027	May 7, 2027	Graduate School Website
3	Conducting the Qualifying Examination and Comprehensive Examination	Between September 5 - 13, 2026	Between January 8 - 15, 2027	Between April 3 - 9, 2027	Between June 7 - 13, 2027	Faculty / College
4	Faculties / Colleges report the examination results back to the Graduate School	Within September 21, 2026	Within January 22, 2027	Within April 21, 2027	Within June 18, 2027	Faculty / College
5	Graduate School announces the examination results	September 25, 2026	January 28, 2027	April 27, 2027	June 25, 2027	Graduate School Website <a href="http://grd.buu.ac.th">http://grd.buu.ac.th</a>

**Notes:**

1. There is no application fee for the first examination attempt. For the 2nd or 3rd attempts, the examination fee must be paid at the Faculty/College, and the receipt must be attached along with the application.
2. In case a student fails the 2nd attempt and wishes to request a 3rd attempt, it must be approved by the Graduate School Committee. If the result of the 3rd attempt is "Fail", the student's status will be terminated.

## Compulsory Training Programs



### Postscript

1. Additional information on the i-Thesis Training Program and the Research Ethics Training Program can be found at this website, <http://grd.buu.ac.th/>
2. The training schedule for Information Literacy training program can be found at Burapha University Library website <https://www.lib.buu.ac.th/> or at BUU Library Facebook page.

### i-Thesis system training procedures

(For International Students: <https://e-learning.buu.ac.th/>)



### Research ethics training procedures

(For International Students: <https://e-learning.buu.ac.th/>)



### i-Thesis system training and Research ethics training

(For Thai Students: <https://mooc.buu.ac.th/>)



## GRD-FORMS System

<https://grd-forms.buu.ac.th/>

for the process of doing Dissertation, Thesis and Independent Study



GRD-FORMS System User  
Manual for Graduate  
Students

# Procedures for Dissertation, Thesis & Independent Study



## DOCTORAL DISSERTATION: PROCESS AND GUIDELINES 2026

In accordance with Graduate School Announcement, Burapha University No. 0016/2569  
Subject: Doctoral Dissertation Requirements for Doctoral Students, Burapha University, B.E. 2569 (2026)





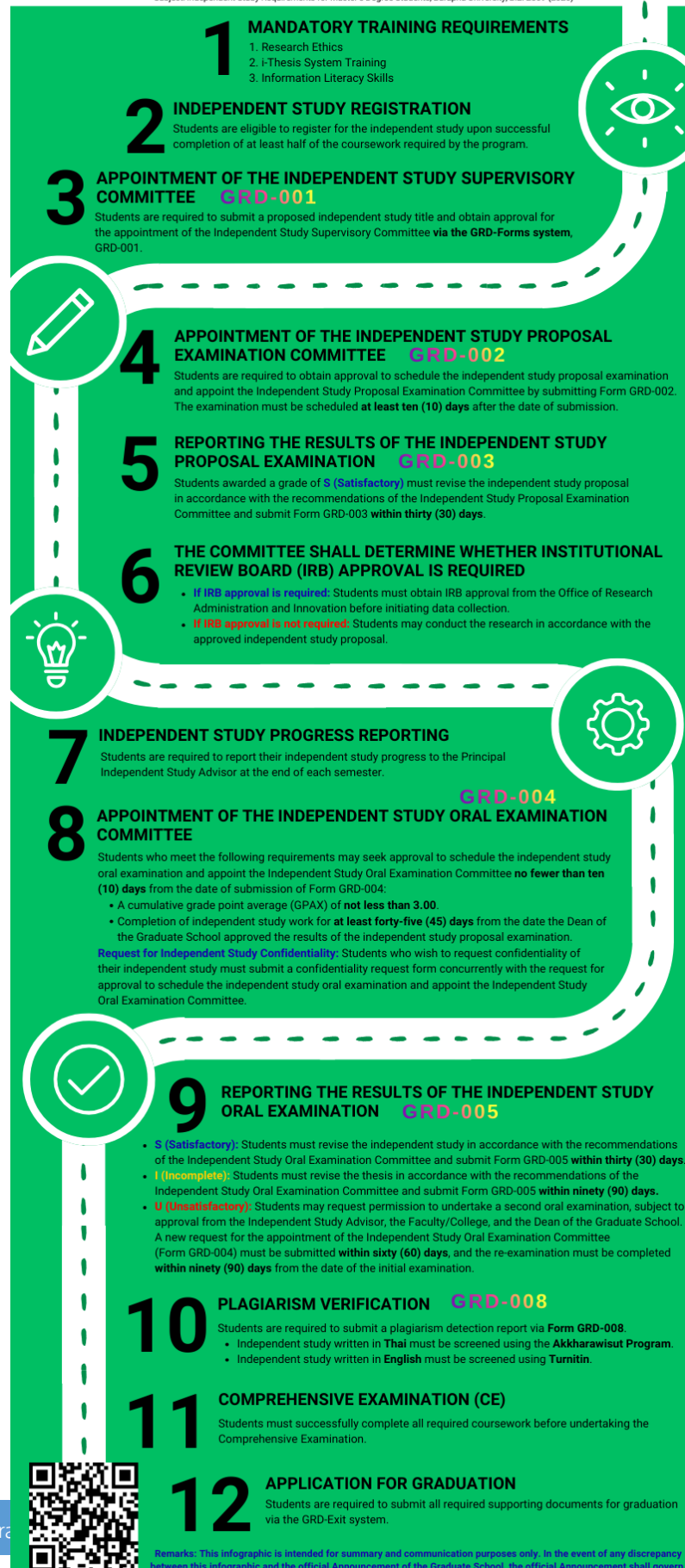
## MASTER'S THESIS: PROCESS AND GUIDELINES 2026

In accordance with Graduate School Announcement, Burapha University No. 0017/2569  
 Subject: Master's Thesis Requirements for Master's Degree Students, Burapha University, B.E. 2569 (2026)



## INDEPENDENT STUDY: PROCESS AND GUIDELINES 2026

In accordance with Graduate School Announcement, Burapha University No. 0018/2569  
Subject: Independent Study Requirements for Master's Degree Students, Burapha University, B.E. 2569 (2026)



### Submission of Supporting Documents for Graduation (GRD-Exit)

Please ask students to proceed in accordance with the Graduate School, Burapha University announcement regarding the final date for submission of documents demonstrating compliance with the graduation requirements for graduate students.

Students are required to use the GRD-Checklist: Graduation Requirement Submission Form, which can be downloaded from the Graduate School website at <http://grd.buu.ac.th/> (Menu “Student Forms” >> Select “Other Forms”)



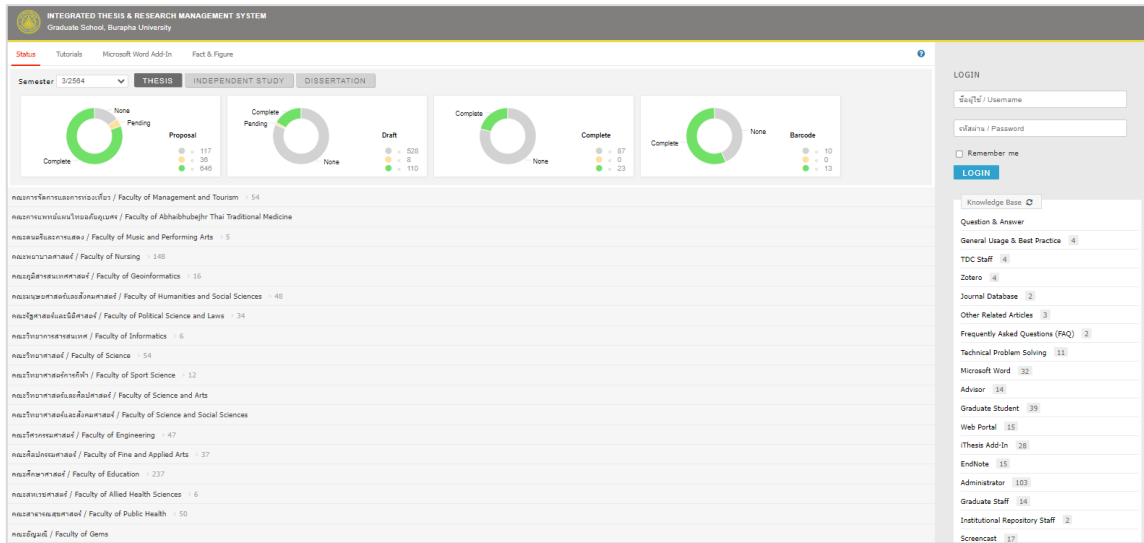
## Submission of Graduation

# GRD-Exit

for Graduate Students, Burapha University

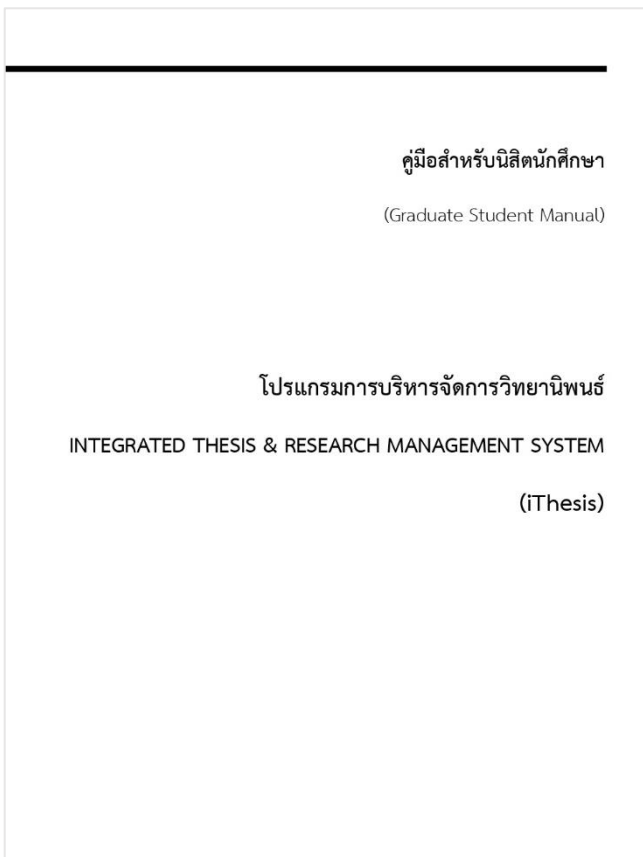
# i-Thesis System

<https://ithesis.buu.ac.th/>



## i-Thesis System User Manual for Graduate Students and i-Thesis Template

<http://grd.buu.ac.th/>



## i-Thesis System User Manual

## Plagiarism Checking of Graduate Student's Academic Works



- Students who write Dissertations/Thesis/ Independent Study in Thai must check with the Akkarawisut program. (<https://app.akarawisut.com/>)



- Students who write Dissertations/Thesis/ Independent Study in English must check with the turnitin (<https://www.turnitin.com/>)

## Information Systems relating to Graduate Students, Burapha University

Burapha University Website	<a href="https://www.buu.ac.th/">https://www.buu.ac.th/</a>
Graduate School website	<a href="http://grd.buu.ac.th/">http://grd.buu.ac.th/</a>
Electronic forms submission system	<a href="https://grd-forms.buu.ac.th/">https://grd-forms.buu.ac.th/</a>
i-Thesis website	<a href="https://ithesis.buu.ac.th/">https://ithesis.buu.ac.th/</a>
e-Learning	<a href="https://e-learning.buu.ac.th/">https://e-learning.buu.ac.th/</a>
BUU MOOC	<a href="https://mooc.buu.ac.th/">https://mooc.buu.ac.th/</a>
Language Institute website	<a href="http://li.buu.ac.th/">http://li.buu.ac.th/</a>
User account and password changes	<a href="http://www.myid.buu.ac.th">www.myid.buu.ac.th</a>
Library website	<a href="https://www.lib.buu.ac.th/">https://www.lib.buu.ac.th/</a>
Computer Center website	<a href="https://ict.buu.ac.th/">https://ict.buu.ac.th/</a>
Office of Registrar website	<a href="https://reg.buu.ac.th/">https://reg.buu.ac.th/</a>
Teaching and learning efficiency evaluation system	<a href="https://assess.buu.ac.th/">https://assess.buu.ac.th/</a>



# Appendix

Compilation of Rules, Regulations, and Announcements for Graduate Students



Compilation of Burapha University Announcements Relevant to Graduate Students



Doctoral Dissertation Requirements for Doctoral Students, Burapha University, B.E. 2569  
(2026)



Master's Thesis Requirements for Master's Degree Students, Burapha University, B.E. 2569  
(2026)



Independent Study Requirements for Master's Degree Students, Burapha University, B.E.  
2569 (2026)



Guidelines for Research Ethics Review for Graduate Students, Burapha University



Approval of Dissertation, Thesis, and Independent Study Proposals and Submission of  
Evidence of Compliance with Graduation Requirements for Graduate Students



Criteria for Determining Evidence Required for Graduate Degree Completion,  
Burapha University



Guidelines for Dissertation, Thesis, and Independent Study Publication for Graduate Students of Burapha University (Issue No. 1 and Issue No. 2)



Note: The English translation of Issue No. 2 is currently in progress.

Standrad for English Proficiency Test Scores for Graduate Students





มุ่งมาตรฐาน  
ประสานความร่วมมือ  
ยึดถือคุณธรรม

**G**oal-driven  
**R**elationship  
**D**edication